

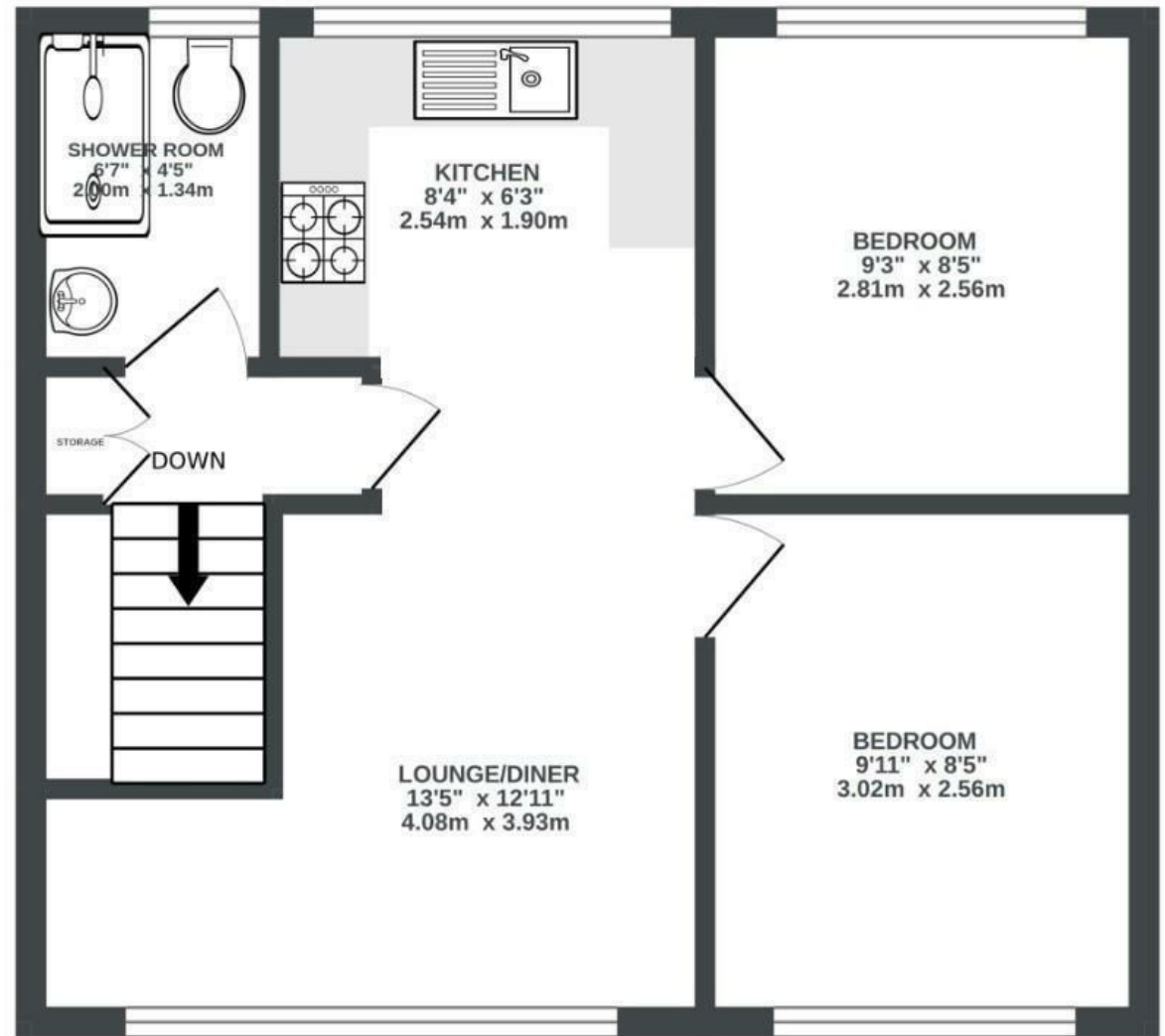
Westfield Place

CLIFTON

APPROXIMATE FLOOR AREA
40.7 SQM / 439 SQFT



2ND FLOOR



Illustrations are for reference purposes only, measurements are approximate, not to scale.

Boardwalk

Westfield Place

CLIFTON, BRISTOL

£

£300,000



BS8 4AY

zzz

2 Bedrooms



1 Bathrooms

"We loved our time at Westfield Place, the suspension bridge is on the doorstep, as are all the charms of Clifton village. Over the years we've been here we've put a lot of effort into making this flat feel welcoming and cosy. The main living area has been a lovely social space for us and our friends. In the warmer months we've enjoyed sitting on the bench at the front, a wonderfully calm little sun-trap. The street has a small and friendly community which we are sad to be leaving."

